

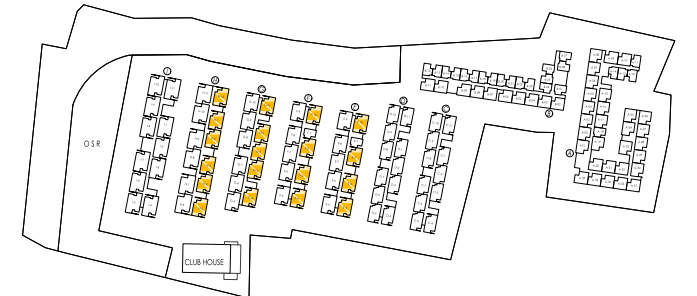
Master Plan





FLOOR
PLANS

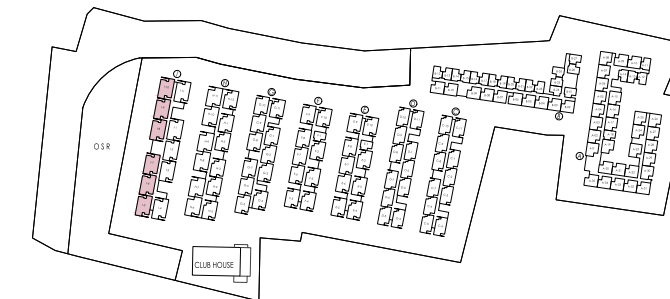






2 BHK LARGE - EAST FACING - 849 SQ.FT.

Carpet Area - 535 Sq. Ft. + Exclusive Balcony Area - 32 Sq. Ft.



3 BHK - EAST FACING - 885 SQ. FT.

Carpet Area - 555 Sq. Ft. + Exclusive Balcony Area - 34 Sq. Ft.



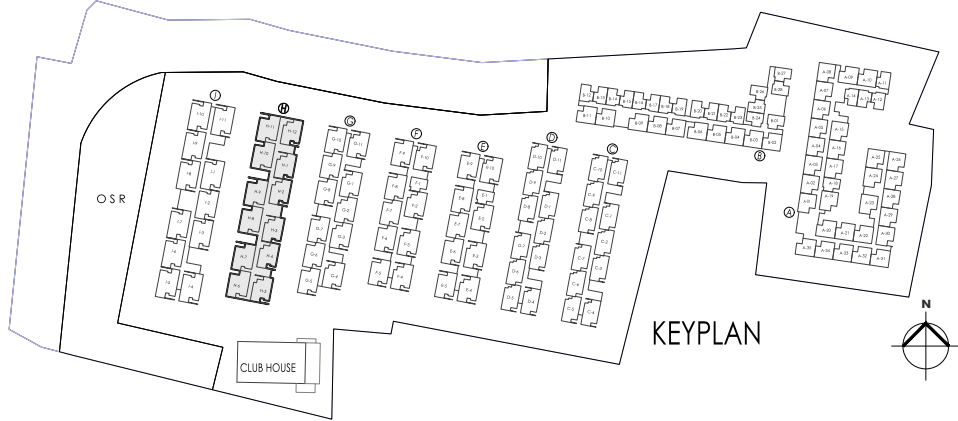
Carpet Area - 555 Sq. Ft. + Exclusive Balcony Area - 34 Sq. Ft.



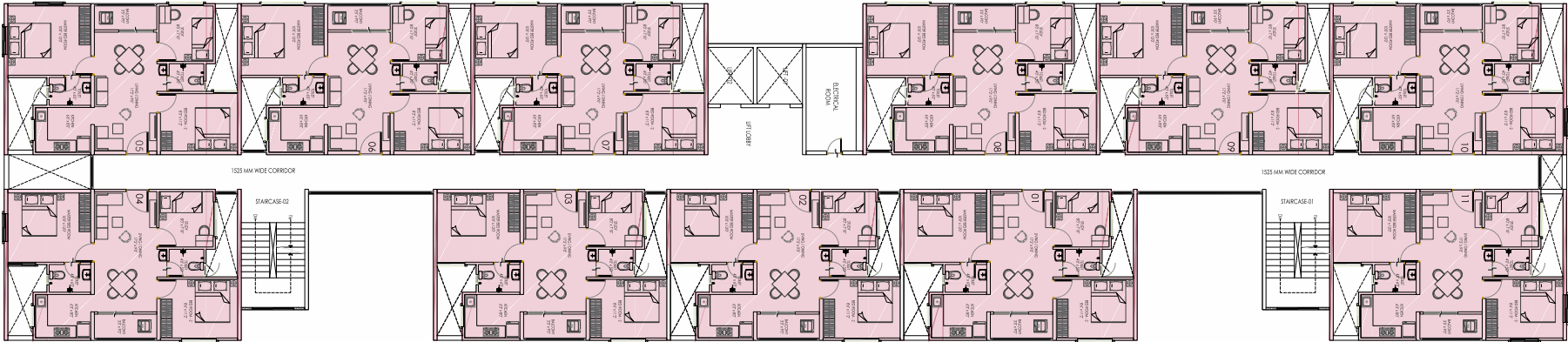
Block-H



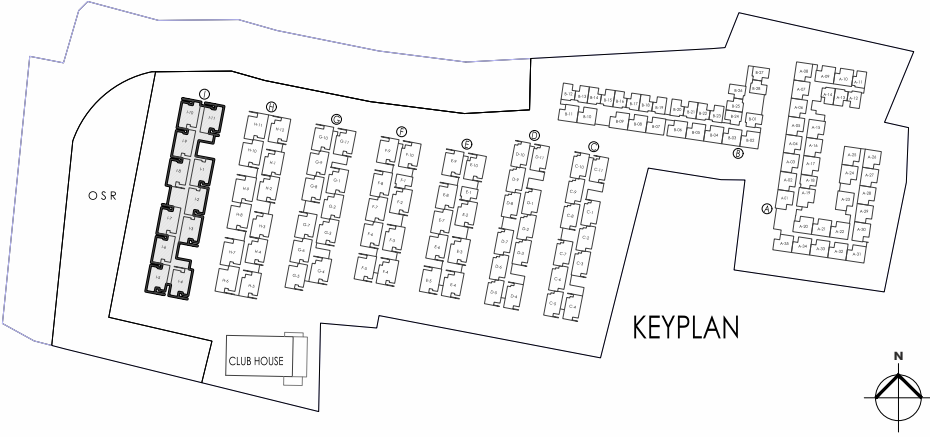
- 2 BHK
- 2 BHK LARGE



Block-I



- 3 BHK



Specifications

Living Room

Main Door	:	7 feet high wooden door frame & flush door shutter / moulded skin panel door shutters with paint finish on both sides
Windows	:	UPVC windows with sliding shutters
Flooring	:	Vitrified tile flooring (2' X2')
Paint	:	Emulsion paint
Electrical	:	Branded modular switches.TV and telephone points

Bedroom

Door	:	7 feet high wooden door frame & flush door shutter / moulded skin panel door shutters with paint finish on both sides
Windows	:	UPVC windows with sliding shutters
Flooring	:	Vitrified tile flooring (2' X2')
Paint	:	Emulsion paint
Electrical	:	Branded modular switches. AC point in master bed room only.

Study Room

Door	:	7 feet high wooden door frame & flush door shutter / moulded skin panel door shutters with paint finish on both sides
Windows	:	UPVC windows with sliding shutters
Flooring	:	Vitrified tile flooring (2' x2')
Paint	:	Emulsion paint.
Electrical	:	Branded modular switches.

Corridor & Lift Lobby

Flooring	:	Anti-skid ceramic tiles
Wall Paint	:	Emulsion paint
Lifts	:	Branded lift.

Kitchen

Windows	:	UPVC windows with sliding shutters
Flooring	:	Vitrified tile flooring (2' x2')
Paint	:	Emulsion paint
Electrical	:	Branded modular switches.
Sink	:	Single bowl stainless steel sink
Platform	:	Granite platform or full body vitrified tiles for kitchen counter & 18” high wall dado

Bathroom

Door	:	7 feet high wooden door frame & flush door shutter / moulded skin panel door shutters with paint finish on both sides
Ventilators	:	Powder coated aluminium ventilators / UPVC ventilators
Flooring	:	Anti-skid ceramic tiles
Wall dado	:	6 Feet height wall dado
Electrical	:	Branded modular switches.
Sanitary Ware	:	Good quality water closets & wash basins
CP Fittings	:	Good quality branded CP fittings

Balcony

Door	:	UPVC french doors - sliding shutters with plain glass
Flooring	:	Anti-skid ceramic tiles
Railing	:	MS railing with enamel painted finish
Other	:	Washing machine provision for all flats

Power Supply (Raw & Backup)

2/3 BHK	:	5KW, three phase
Back-up inside flats	:	Provision for inverter
DG backup for common areas & lifts		

urbanrise

An Alliance Group Company

Urbanrise, a part of Alliance Group is the largest Real Estate Developer of South India. We are distinguished by our world-class standards, ethical practices, on-time delivery and complete transparency. Our projects are funded by the world's largest sovereign fund ADIA (Abu Dhabi Investment Authority) through Kotak Realty Fund and IndoStar Capital Finance Limited.



URBANRISE AWARDED
No-1 Brand in South India
By Times Realty Icons 2018

OUR PROJECTS

